



# Roxtec LabSeal™ C LTX

Prolaz jednostavan za čišćenje, prikladan za laboratorije i sterilne prostorije.

Roxtec LabSeal™ optimiziran je za prolaze kabela i cijevi u hermetički zatvorenim objektima kao što su laboratoriji i sterilne prostorije. Higijenski je dizajniran jer ima okvir od aluminija premazan prahom koji se lako čisti i glatku površinu s rubovima s mogućnošću odvodnje, integrirane kompresijske jedinice i skrivene vijke za montažu. Lagan i prostorno učinkovit prolaz jednostavan je za ugradnju. Osigurava hermetičku brtvu kada je pričvršćen na zid ili strop i pruža rezervni kapacitet za buduće nadogradnje.



- Jednostavna montaža
- Lako za održavanje i pregledavanje
- Osigurava rezervni prostor
- Modularni dizajn

## Karakteristike proizvoda



Vatrootpornost



IP/UL NEMA

## Struktura instalacije



Sendvič panel



Gips

## Vrsta montaže



Pričvršćivanje vijcima

## Klase i certifikati

### Požar

- Razred E/EI u skladu s normom EN 13501

### Nepropusnost

- IP 66/67 prema IEC 60529

## Dimenzije okvira

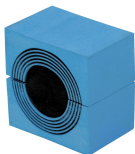
mm/kg

Varijante okvira u nastavku ograničen su izbor. Za cijeli raspon okvira i konfiguracija posjetite [roxtec.com](https://www.roxtec.com).

Proizvod	Otvori okvira	Prostor za smještaj	Vanjske dimenzije WxHxD	Dimenzije otvora w x h	Težina	Broj artikla
LABSEAL C LTX WITH COUNTER FRAME 0-40	2	60 x 180	201 x 296 x 86	165(+2/-1) x 261(+2/-1)	2.9	241407
LABSEAL C LTX WITH EXT. FRAME 90-100	2	60 x 180	201 x 296 x 146	165(+2/-1) x 261(+2/-1)	3.5	244894

## Komponente za brtvljenje

### Komponente za brtvljenje



Modul CM sa značajkom Multidiameter™

Za detaljne informacije posjetite [roxtec.com](https://www.roxtec.com).



# Unaprijed konfigurirani kompleti za prolaze

mm/kg



LABSEAL C LTX/6



LABSEAL C LTX/15



LABSEAL C LTX/24

Proizvod	Konfiguracija	Vanjske dimenzije WxHxD	Dimenzije otvora w x h	Težina	Broj artikla
LABSEAL C LTX/6	6x (24.0-54.0)	201 x 296 x 146	165(+2/-1) x 261(+2/-1)	4.5	246143
LABSEAL C LTX/15	12x (10.0-25.0), 3x (24.0-54.0)	201 x 296 x 146	165(+2/-1) x 261(+2/-1)	4.5	246142
LABSEAL C LTX/24	24x (10.0-25.0)	201 x 296 x 146	165(+2/-1) x 261(+2/-1)	4.5	246141

The product information provided by Roxtec does not release the purchaser of the Roxtec system, or part thereof, from the obligation to independently determine the suitability of the products for the intended process, installation and/or use.

Roxtec gives no guarantee for the Roxtec system or any part thereof and assumes no liability for any loss or damage whatsoever, whether direct, indirect, consequential, loss of profit or otherwise, occurred or caused by the Roxtec systems or installations containing components not manufactured by an authorized manufacturer and/or occurred or caused by the use of the Roxtec system in a manner or for an application other than for which the Roxtec system was designed or intended.

Roxtec expressly excludes any implied warranties of merchantability and fitness for a particular purpose and all other express or implied representations and warranties provided by statute or common law. User determines suitability of the Roxtec system for intended use and assumes all risk and liability in connection therewith. In no event shall Roxtec be liable for indirect, consequential, punitive, special, exemplary or incidental damages or losses.

The Roxtec products are offered and sold in accordance with the conditions of the Roxtec General Terms of Sales. The latest version of the Roxtec General Terms of Sales can be downloaded from <https://www.roxtec.com/en/about-us/about-roxtec/general-terms-of-sales/>

We reserve the right to make changes to the product and technical information without further notice. Any errors in print or entry are no claims for indemnity. The content of this publication is the property of Roxtec International AB and is protected by copyright.

This document was generated on = 2025-12-01

